



where your data matters

Customer
Case Study

OceanWise Data supports the new Welsh Government Marine Plan

“ The Welsh Government is required, as part of its Marine Plan, to present accurate marine mapping data that is available and understandable to anyone who needs it. **OceanWise** has worked closely with us to develop this service. ”

*Phil Coates - Marine Plan Implementation
and Evidence Manager, Welsh Government.*



The Requirement

The Welsh Government is seeking to better manage its marine space by implementing a new Marine Plan. The plan requires mapping of strategic resource locations in Welsh waters including renewable energy sites, aquaculture and fish farms, ports and shipping. The information is being presented via a Marine Portal giving access to this using an interactive map base.

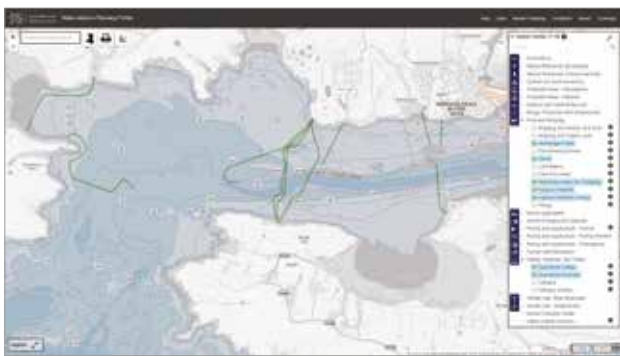
For this to happen the Welsh Government needed a clear visual and spatial awareness of its waters and the features that exist on the surface, in the water column and on the seabed. The challenge was to make this available to a wide audience as Phil explains... "The information had to be of high quality - but available and understandable to all. A conservation consultant will require data at a detailed level but a member of the public might want to click on a map and be able to engage with us too."

Key Benefits for the Welsh Government

- Provision of up to date marine mapping, with multi-layered themes provided to key stakeholders across the Welsh Government.
- The map data is proving to be a great asset in decision support and asset management and underpins the Welsh Government Marine Portal.
- Access to high quality data through OceanWise's strong relationships with the UK Hydrographic office and other data providers.
- Marine Themes web-based mapping from OceanWise also offers an opportunity to develop more detailed layers to, for example, assist sustainable planning for aquaculture and tourism and leisure.

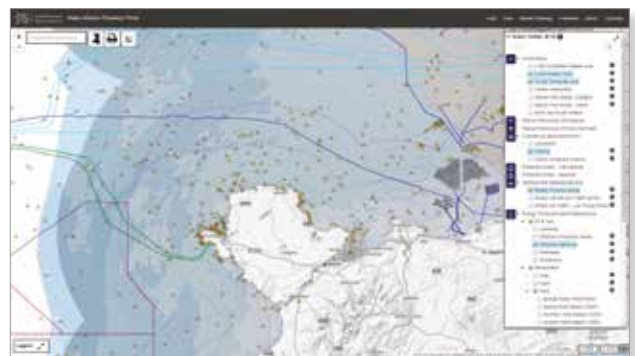
Methodology

To enable the Marine Plan to have access to clear and user-friendly data, OceanWise provided its **Marine Themes** intelligent marine mapping data. This data is being used for planning, analysis and editing purposes with Raster Charts data provided for context.



The immediate benefits are being able to see all Welsh national waters in a GIS with seamless mapping, zoom and editing facilities with the ability to add additional layers of data pertinent to the marine planning process. In the longer term this will lead to better and quicker decision making and more efficient management of resources.

The map based portal is the de-facto go-to place for information about marine planning in Wales.



Another key advantage is time saved. As Phil Coates explains, "It would be much more difficult to talk to all the different suppliers of data and, what's more, they are not set up to provide their data in a manner we could use. That's why it's a real advantage to be able to access OceanWise data so easily."

Phil added that OceanWise's relationship with the UK Hydrographic Office also provides a reassuring dialogue when data needs to be checked. "There's data on wrecks supplied by the UK Hydrographic Office (UKHO). I noted a wreck in the wrong position so we needed to have a dialogue to amend it. OceanWise enabled this to take place which says something about the relationship it has with the UKHO."



Enjoy the confidence of working with marine data experts
For information contact info@oceanwise.eu or phone +44 (0)1420 768262
www.oceanwise.eu

