



End-to-End Marine and Coastal Data Management and Decision Support e-newsletter Summer 2014



Durdle Door, Jurassic Coast, Dorset, UK

Welcome to Issue No 4 of our newsletter. OceanWise continues to grow its presence in the ports and harbours sector developing bespoke data management solutions and services for an increasing portfolio of customers. Another area that has seen significant growth in the last six months is our oceanographic data sharing and publishing systems and services (Port-Log and Ocean Database) with enquiries from across the world. A couple of these are described in this bulletin. We have also had significant successes in the provision of Marine Themes vector mapping to UK government (more below) and the commercial sector

International Harbourmasters Association (IHMA) Congress

OceanWise recently attended, for the first time, the IHMA Bi-annual Congress held this year in Bruges, Belgium in May. Partnering with our French distributor Geomod and Valeport Ltd, the event gave us the opportunity to demonstrate our products and services to an influential global audience and to also discuss their future needs. The event proved very successful for us.

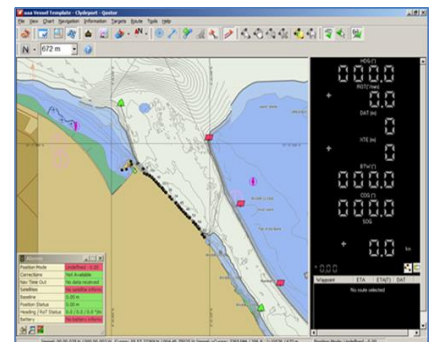
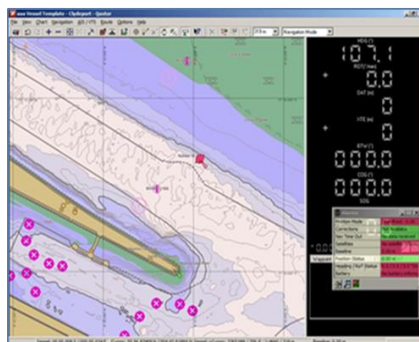
Bathymetric and Port ENC's for Peel Ports Pilots



We have recently provided the Marine Department at Peel Ports (Clydeport) with specialist tools that take processed hydrographic survey data and converts it into Electronic Navigational Charts (ENCs) suitable for use within Portable Pilot Units (PPUs). The production of the Bathymetry and Port ENCs, which are now being used operationally by Clydeport Pilots, is an extension of Clydeport's comprehensive data management and geographical information system (GIS) which OceanWise is delivering across Peel Ports Group.

Clydeport Pilots need high resolution and comprehensive detailed information, including chart data, on which to base port and maritime operations for use in their PPU's as they previously were unable to access this information from the bridge of a ship in digital form.

The combination of our Maritime Toolbar and ENC Writer Extension is a natural addition to the maritime workflow software suite that Peel Ports has been using for over 2 years. Clydeport Pilots are now able to overlay high resolution bathymetry from recent surveys and other locally held operational data on official ENCs, as well as producing Port ENCs derived from source data stored and read directly from a common spatial database, as part of Peel Ports overall 'Maritime Information Infrastructure' avoiding the need for stand-alone software products and replicate datasets.



Gillan Locke, Marine Officer at Peel Ports explains, "We have found the Bathymetry and Port ENCs to be an essential tool in our ability to safely navigate vessels within the River Clyde. Knowing our in-house Survey Team can now execute a survey and create ENCs quickly gives us increased confidence and security with any pilotage operation, and will assist us in planning and executing future large ship movements".

NEWS FROM OUR DISTRIBUTORS

Integrated service offering now available from emapsite

Marine by emapsite, one of its four key service areas, is now fully incorporated into the emapsite platform enabling the generation of web services that include OceanWise marine and other data (e.g British Geological Survey, Ordnance Survey), that can be delivered directly into the desktop or web application. It is available to tens of thousands of professional users across the UK.

For more information, visit www.emapsite.com, or email support@emapsite.com

AIS Data bundled with WMS feeds now available from Find Mapping

Under a reseller agreement with ExactAIS, Find Mapping is now able to provide a unique web based product combining both real-time and historical terrestrial and satellite AIS data with OceanWise's Marine Raster Charts, Marine Themes and Marine Bathymetry, as important background contextual data. Given the importance of sea surface activity in the UK Marine Planning environment this will provide clients with an important analysis tool for project feasibility and licence applications. These data sets are suitable for incorporation into either a GIS environment or a Geospatial Web application.

Updated Site Launched at marinefind.co.uk

Find Mapping Ltd has launched an updated marine branded website to reflect the increased scope of services. It features a new online ordering portal for OceanWise's marine data, in a variety of data formats. In addition the site has been designed to allow clients to configure their own web based map services, subscribe to these services and take advantage of new data licencing models.

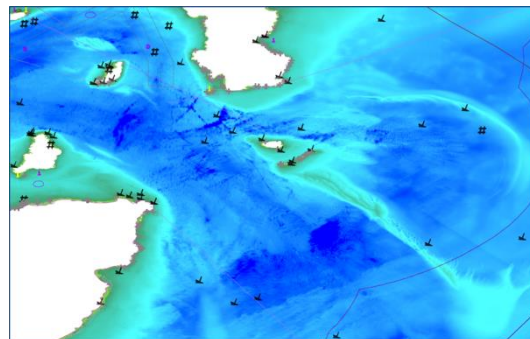
Seatronics and OceanWise sign a World-Wide Agreement for Oceanographic Systems and Services

We have recently appointed Seatronics as a world-wide distributor of our range of oceanographic software and services. The deal combines Seatronics' instrumentation capability with OceanWise's portfolio of data telemetry, storage and publishing software and services, and OceanWise's expertise in system design and integration, data management, analysis and reporting. Seatronics are global leaders in the sale and rental of marine electronic equipment, specialising in geophysical survey, navigation and positioning, oceanographic systems, video inspection, ROV survey, ROV tooling and diving & non-destructive testing. This agreement brings together two companies with excellent complementary knowledge and skills to deliver first-class services to clients. This relationship is already bearing fruit as more clients for instrument sales and rental are requiring data to be available on-line and an increasing number worldwide are looking for complete systems rather than individual sensors. "Our relationship with OceanWise means Seatronics can now offer comprehensive 'turnkey' solutions to address this requirement" says Adil Ali, International Product Sales Manager. A couple of large projects have already been secured, with more in the pipeline, details of which will be announced soon.

OceanWise now the supplier of choice to UK Government for Digital Marine Mapping

OceanWise has been awarded the Framework contract for the supply of Marine Mapping Data to the Scottish Government. This award means that OceanWise is now the supplier of choice to most UK Government organisations requiring marine data for use in desktop and web GIS, including the Welsh Government, Northern Ireland Government, the Isle of Man, the Channel Islands, Natural England and the Environment Agency. The Framework will involve delivery and maintenance of OceanWise's Raster Charts and its third generation marine mapping product, Marine Themes, which includes a high resolution Seabed Digital Elevation Model. The data will be delivered as OGC compliant web services via OceanWise partner and distributor, FIND Mapping Ltd, as well as in file based open and proprietary formats.

The aim under this framework, as with OceanWise's other Government frameworks, is to make marine data as widely accessible as possible to all public sector bodies including local authorities and emergency services, as is currently the case with land mapping data provided by Ordnance Survey, for example, under the various Public Sector Mapping Agreements.



New Distributor appointed

We welcome ChartWorld International of Hamburg, Germany, as a new Distributor and Value-Added Re-seller of our products and services. They have been value-added resellers of digital electronic charts for marine applications and delivering digital data for SOLAS, Inland Waterways, and workboats use since 2002. <http://www.chartworld.com>

Upcoming Events

OceanWise is speaking and /or exhibiting at the following events. Put them in your diary and come along to discuss your marine data information needs with us:

Port of London (PLA) Open Day-Careers & Trades Fair: Gravesend, 16th July 2014
www.pla.co.uk/About-Us/Thames-Careers-Open-Day

MTS/IEEE Oceans 2014 Conference: St Johns, Newfoundland; 14th-18th September 2014.
www.oceans14mtsieeeestjohns.org/

5th Extraordinary Hydrographic Conference (EIHC): Monaco; 6th-10th October 2014.
http://www.iho.int/srv1/?option=com_content&view=article&id=388&Itemid=306

SeaTech Week: Brest, Brittany, France: 14-16th October 2014.
www.seatechweek.com

Hydro 2014 Conference: Aberdeen Conference Centre, 28th-30th October 2014.
www.hydroconferences.org/hydro2014

UK Harbourmasters Association Autumn Seminar: London, 19th November 2014.
www.ukhma.org/events.php

Tidal Monitoring & Display System for Ras al-Khaimah Port, UAE

Seatronics and OceanWise have jointly been awarded a contract by Ras al-Khaimah Port, United Arab Emirates for the supply and support of a Tidal Monitoring, Telemetry and Display System, comprising six Valeport TideMasters and Water Level Radars and OceanWise's data telemetry equipment, plus management and web based publishing software, Ocean Database and Port-Log.

All data handling and storage will be provided by the OceanWise Port-Log.net extract, transform and load (ETL) service and Ocean Database installed on an OceanWise managed cloud server. The system includes tidal predictions resulting from the harmonic analysis of the acquired data to be undertaken by OceanWise, a status monitoring and alerts service, and a web based map or geographic information system (GIS). The web GIS can be expanded to include additional data layers, such as



tidal flows and vessel locations via an AIS receiver. As a consequence, the system will form the core of a Maritime Information

Infrastructure for Ras al-Khaimah port. User access will principally be via GPRS using standard tablets and smart phones.

OceanWise to host 2014 Maritime GIS Workshop

Back by popular demand, our annual stakeholder workshop will take place on Tuesday 18th November at the School of Economic Science, Mandeville Place, London when we will provide a varied and interesting day covering a range of topics, plus debate, discussion and networking on the value and benefit of GIS as an effective tool for managing assets and making decisions in the marine and coastal space. Look out for your e-mail invitations in mid-August. For more information contact john.pepper@oceanwise.eu

Digital Elevation Model enhanced for EMODNet

The rebuilding of the UK and Ireland Digital Elevation Model (DEM) as part of our contract with EMODNet has been completed. This has been driven by more rigorous Phase 2 requirements resulting in additional data being uploaded into the model as well as enhancing the Common Data Index (CDI) metadata for data managed by the SeaDataNet data centres.