



ROYAL YACHT SQUADRON

WIND MONITORING SYSTEM

Matthew French



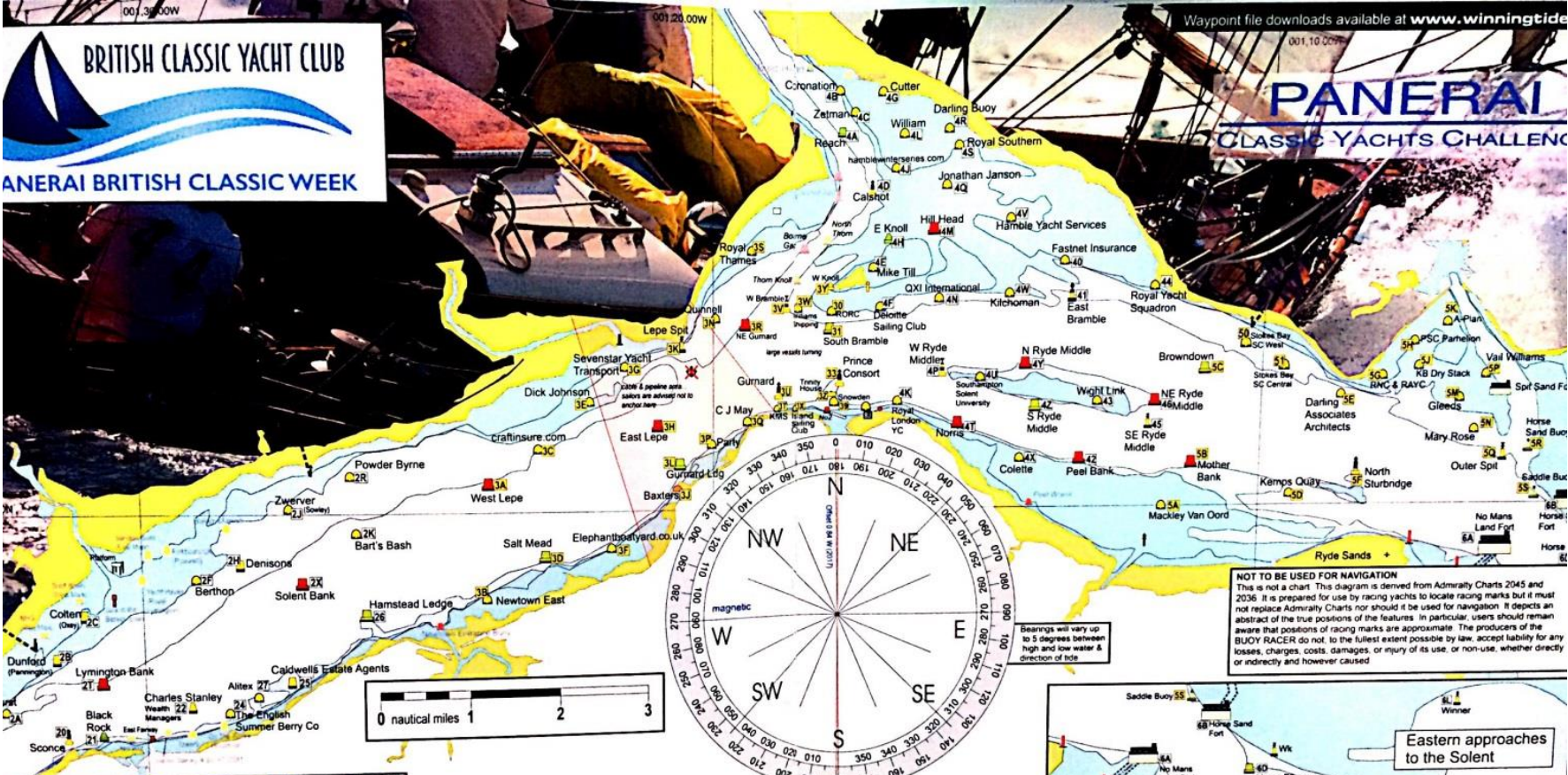






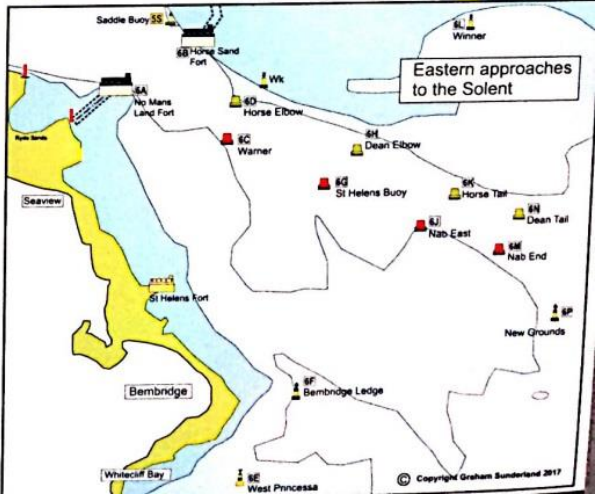
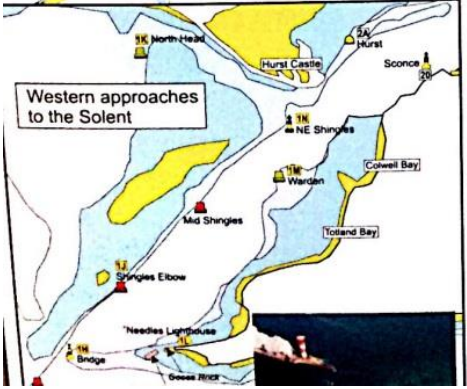






NOT TO BE USED FOR NAVIGATION
This is not a chart. This diagram is derived from Admiralty Charts 2045 and 2036. It is prepared for use by racing yachts to locate racing marks but it must not replace Admiralty Charts nor should it be used for navigation. It depicts an abstract of the true positions of the features. In particular, users should remain aware that positions of racing marks are approximate. The producers of the BUOY RACER do not, to the fullest extent possible by law, accept liability for any losses, charges, costs, damages, or injury of its use, or non-use, whether directly or indirectly and however caused.

Bearings will vary up to 5 degrees between high and low water & direction of tide



Designation	P or S	Mark name or position

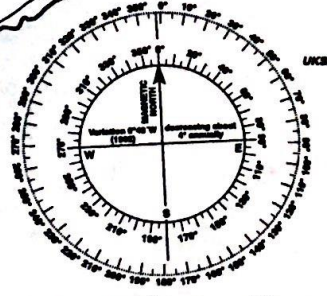
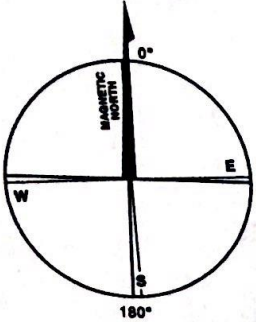
Designation	P or S	Mark name or position

FOR GUIDANCE ONLY
(Not a Sailing Instruction)

CENTRAL SOLENT RACING CHART

- KEY**
- ♣ Special Racing Mark
 - ⊙ Cardinal Navigation Buoy
 - △ Green Navigation Buoy
 - ◻ Red Navigation Buoy
 - ⊕ Buoy Bounding Area
 - ⊞ Precautionary Area
 - ⊞ Mooring Buoy

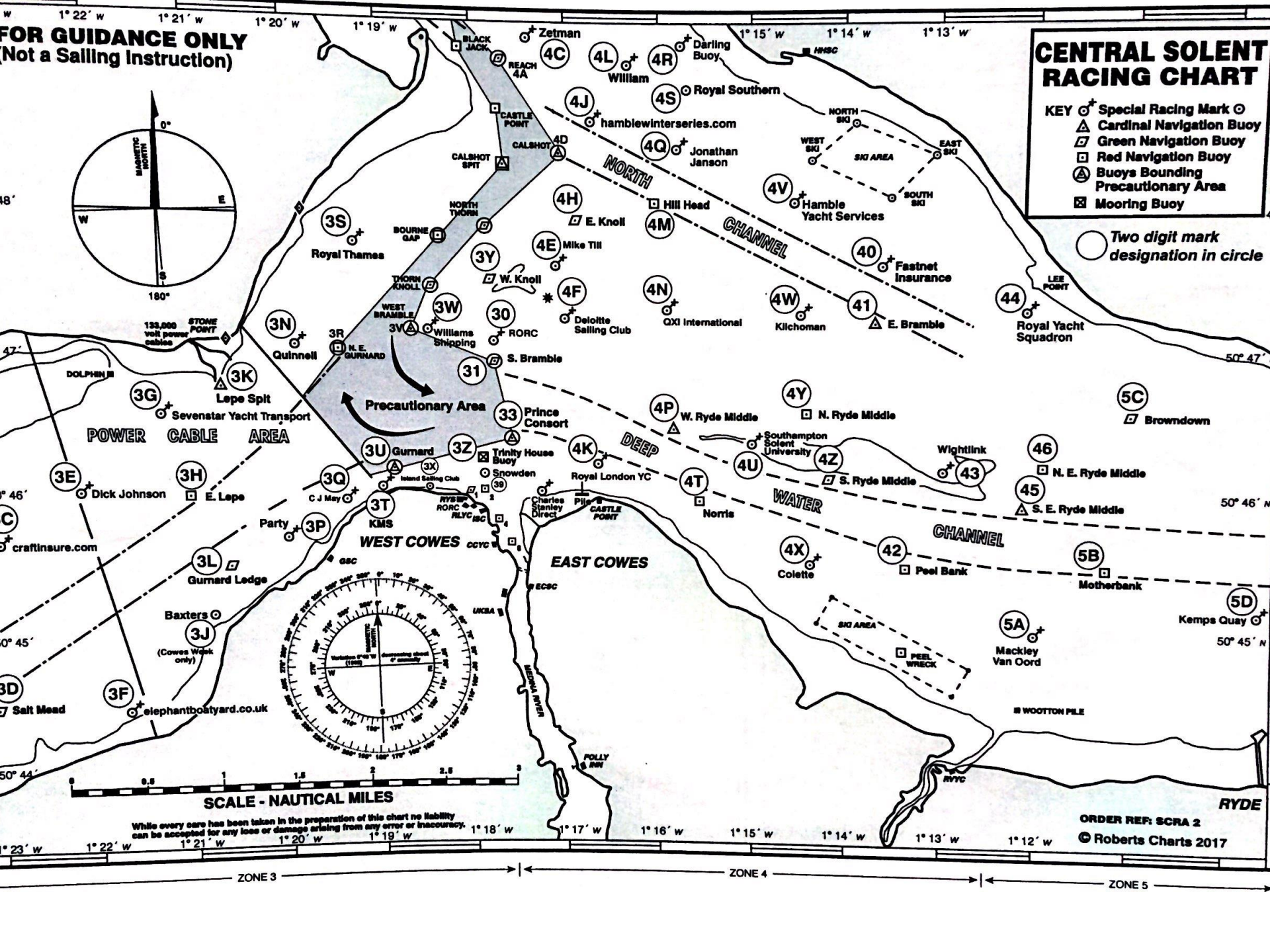
○ Two digit mark designation in circle



While every care has been taken in the preparation of this chart no liability can be accepted for any loss or damage arising from any error or inaccuracy.

1° 23' W 1° 22' W 1° 21' W 1° 20' W 1° 19' W 1° 18' W 1° 17' W 1° 16' W 1° 15' W 1° 14' W 1° 13' W 1° 12' W

ZONE 3 ← | → ZONE 4 | → ZONE 5



ORDER REF: SCRA 2
© Roberts Charts 2017

Laid Courses

The course to be sailed is shown below each course diagram.

Leave all marks to port unless indicated (S) to starboard in courses with gates.

is Start / Finish Line. + is Finish Line.

Marks shown in brackets () will not be laid unless the designated symbol is displayed as follows:

When displayed means a Spreader or Offset Mark (1A) is laid.

When displayed means the Leeward Mark is a gate.

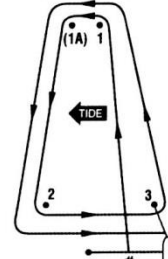
When displayed means finish the other side of the committee boat to the start line.

Course A



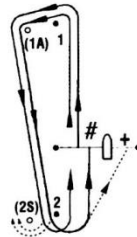
- A1** Start-1-(1A)-2(2S)-1
- A2** Start-1-(1A)-2(2S)-1-(1A)-2(2S)-1

Course N



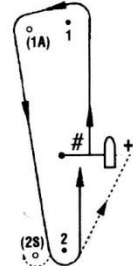
- N1** Start-1-(1A)-2-+
- N2** Start-1-(1A)-2-3-1-(1A)-2-+
- N3** Start-1-(1A)-2-3-1-(1A)-2-3-1-(1A)-2-+

Course E



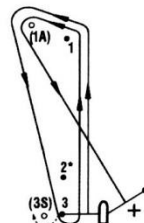
- E1** Start-1-(1A)-2(2S)-# or +
- E2** Start-1-(1A)-2(2S)-1-(1A)-2(2S)-# or +
- E3** Start-1-(1A)-2(2S)-1-(1A)-2(2S)-1-(1A)-2(2S)-# or +

Course G



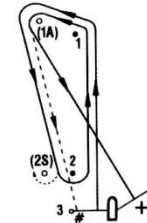
- G1** Start-1-(1A)-2(2S)-# or +
- G2** Start-1-(1A)-2(2S)-#-1-(1A)-2(2S)-# or +
- G3** Start-1-(1A)-2(2S)-#-1-(1A)-2(2S)-#-1-(1A)-2(2S)-# or +

Course U



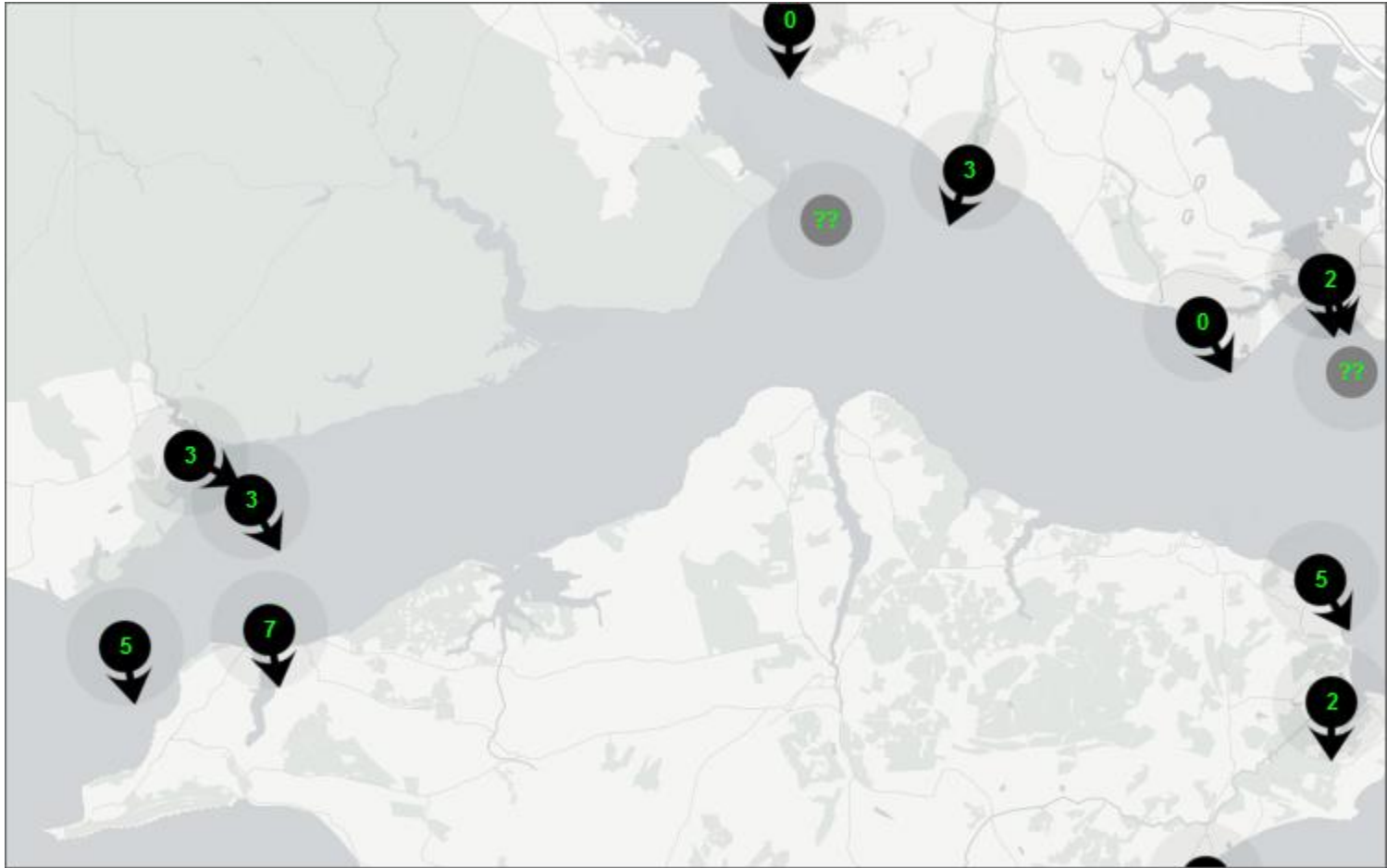
- U2** Start-1-(1A)-3(3S)-1-(1A)-+ (shown above)
 - U3** Start-1-(1A)-3(3S)-1-(1A)-3(3S)-1-(1A)-+
- *Mark 2, if laid, is not a mark of this course

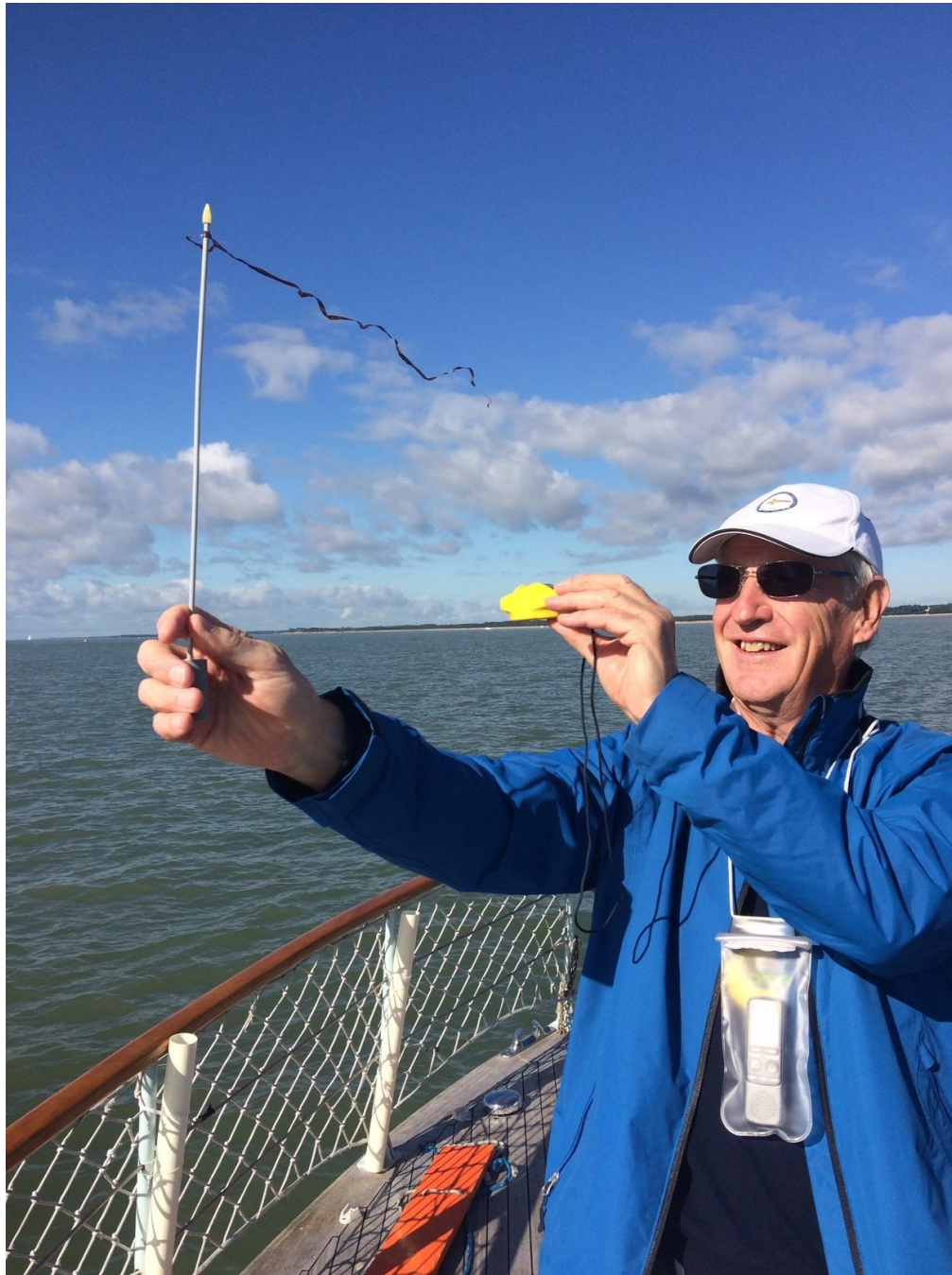
Course V



- V1** Start-1-(1A)-+ or #
- V2** Start-1-(1A)-2(2S)-1-(1A)-+ (shown above) or #
- V3** Start-1-(1A)-2(2S)-1-(1A)-2(2S)-1-(1A)-+ or #

Existing Permanent Stations





REQUIREMENTS FOR A RACE OFFICER'S WIND MONITORING SYSTEM

This requirement is for a wind monitoring system to be set up in vessels of opportunity usually as committee vessels for racing but occasionally as purely remote wind monitoring vessels

Standard

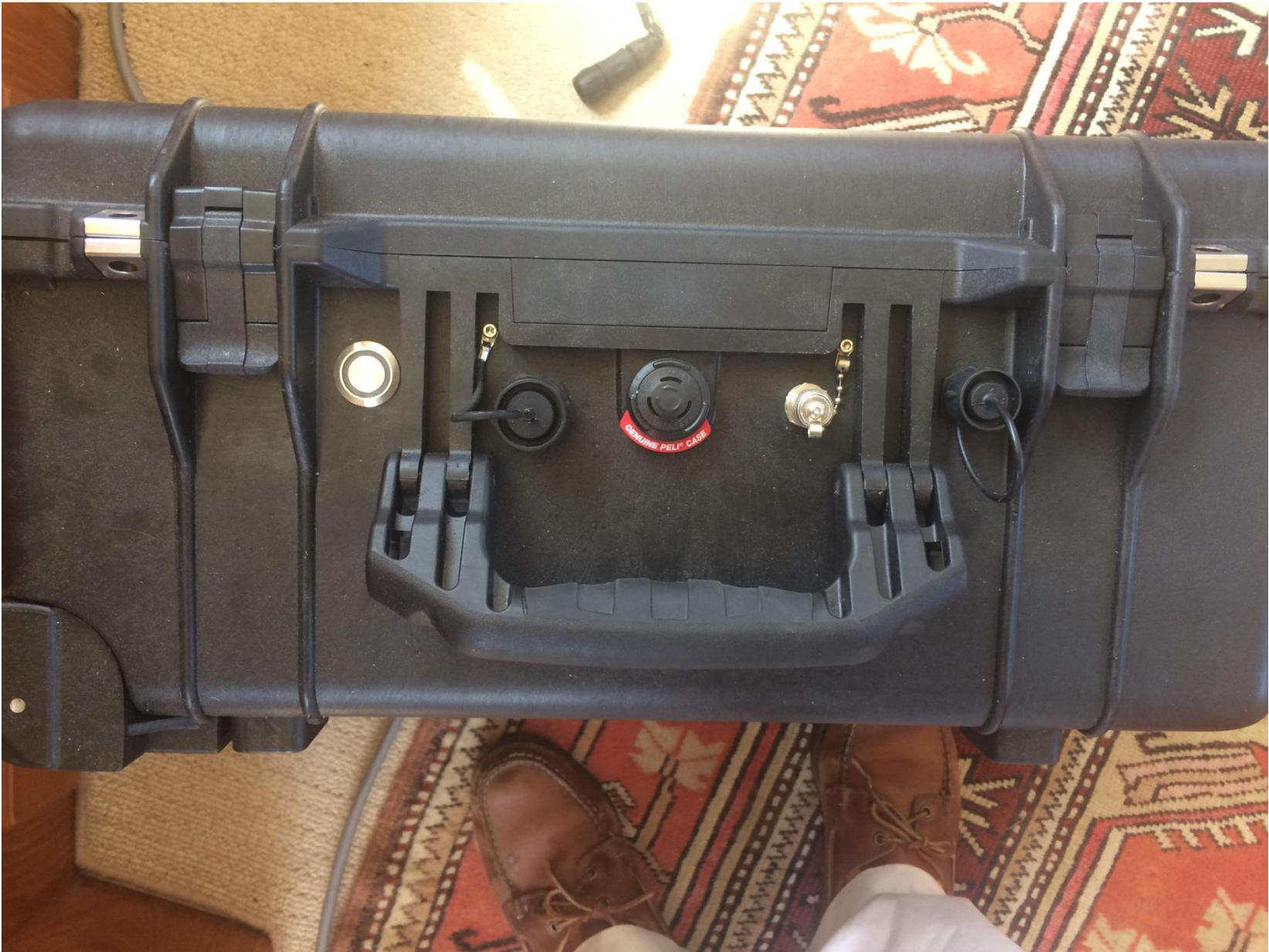
- Wind vane – preferably non-moving e.g. ultrasonic or solid state head
- Easily mountable and de-mountable
- Ability to indicate actual, not relative, wind in magnetic/true bearing with speed in knots
- Wireless transmission from sensor to data viewer
- Self-contained power supplies. Must last for a full day's racing but can have battery change.
- Visible real-time outputs on a suitable off the shelf standard medium e.g. tablet or mobile phone
- Must be capable of delivering to more than one outlet concurrently
- Options of differing time frames for display outputs e.g. 30 sec, 1, 2, 5, 10, 30, 60 min
- Ability to show graph of wind speed and direction over selected time frame with digital output of actual sp & dir
- Display medium to be easily visible in bright sunlight
- Peli case or other suitable storage/carriage case.

Options

- Data to be loggable – logger to be decided but easily used with PC/laptop or other analysis system
- Real-time data to be accessible from remote site either by ‘push or pull’ method i.e. Data continually transmitting or remote user has to log in to access data.
- Actual, not sailing, wind sp & dir to be available when vessel is underway e.g. drifting on the tide.
- Small boat e.g. RIB, option
- Ability to show two wind instruments concurrently on display(s)







iPad 11:44 91%

rys.port-log.net

Dist Become A... 240v to 11... Living Vort... Watreco -... World Livi... BBC Radio... Port-Lo...

☰ OceanWise

Station	Tide	Predicted	Surge
Bramble	3.22 ↑	2.90 ↑	0.33

Station	Wind Direction	Wind Sp	Gust Sp
Bramble	155° _{SSE}	4.4 ↑	6.3
RYS1	131° _{SE}	7.7 ↑	9.1
RYS2			
RYS3			
RYS4			

Copy Look Up Share...

Sun May 28 2017 11:44:37 GMT+0100 (BST)



