

Geospatial Data at the Heart of Disaster Relief

Marine Data Management & GIS
Workshop

Kirsty Ferris

22nd November 2017

Overview

- Humanitarian mapping charity that works through skilled volunteers.
- We help target and coordinate the delivery of humanitarian aid.
- Since 2003 we have responded to more than 70 emergencies.

Earthquake



Floods



Hurricane





What we do

Disaster response



Before we get there.



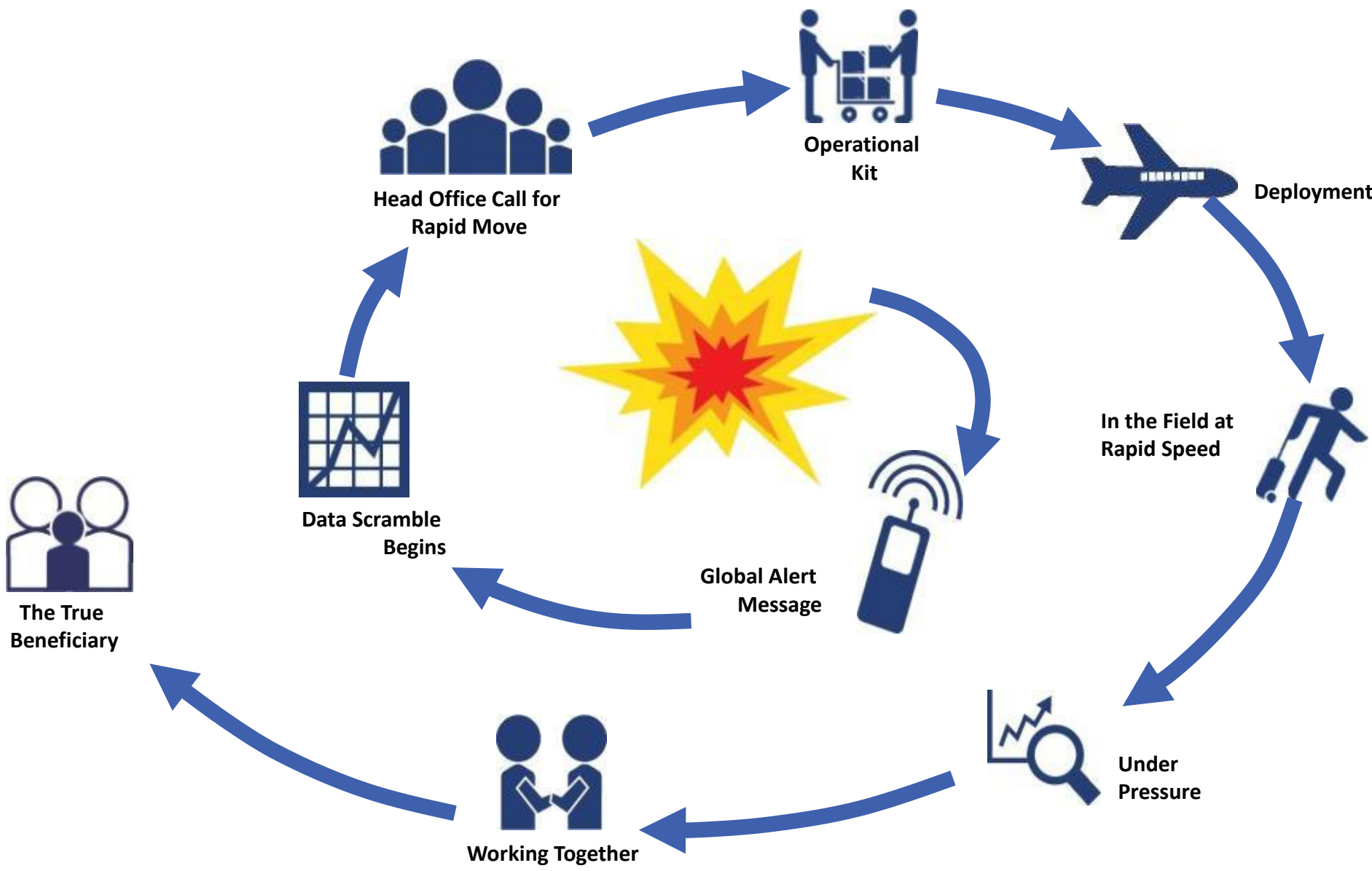
Preparedness & Training



How we work

Our team





Our values

- **Volunteerism**
- **Independence**
- **Continuous Innovation**
- **Professionalism**
- **Collaboration**
- **Transparency**

MapAction Training



Example maps



**Philippines
Typhoon Haiyan (Yolanda)
Population by municipality
in the path of the typhoon
(as of 09 Nov 2013)**

Map shows the predicted and actual paths of the typhoon. Population figures are shown only for the likely affected areas. Population data is from 2010.

Settlements
● City

Actual Storm Path
[Orange line with arrows]

Predicted Storm Path
[Green line with arrows]
2181 GMT 130 Nov 2013

Administrative Areas
□ Province

Population by Most Affected Municipality
Taken from 2010 figures

4100 - 20000
20000 - 50000
51000 - 70000
70000 - 100000
100000 - 150000
150000 - 200000
200000 - 300000
300000 - 470000



Data sources:
Situational data: UNOCHA, PAGASA, Joint Typhoon Warning Centre
Boundaries: GADM
Settlements: OSM

Created: 08 Nov 2013 / 14:00 UTC+08:00
Map Document: MA002_PopulationTrack_v01
Projection (Datum): WGS 1984
Globe Number: TC-2013-000139-PHL

The depiction and use of boundaries, names and associated data shown here do not imply endorsement or acceptance by MapAction.

Produced by MapAction www.mapaction.org
philippines@mapaction.org





Liberia: Ebola Outbreak - Location and status of Ebola Response Units (as of 14 Oct 2014)

Map shows the location and status of known Ebola Treatment Units (ETUs), Community Care Centres (CCCs), Laboratories (LABs) and Triage Centres (TRIs).

The ETUs, CCCs, LABs and TRIs are as of 14 Oct 2014.
The cumulative case numbers are as of 04 Oct 2014.

Ebola Response Units

Type, Status

- TRI, Open
- ETU, Open
- ETU, Under Construction
- ETU, Planned
- CCC, Planned
- LAB, Open

Settlements

- National
- County

Borders

- National
- County

Data sources

MoHSW, DoD, LISGIS, NGA

Created 14 Oct 2014 / 13:00

Map Document MA012_Ebola_Treatment_Units_v7

Slide Number EP-2014-030039-LBR

Produced by MapAction with support from UKaid

The depiction and use of boundaries, names and associated data shown here do not imply endorsement or acceptance by MapAction.





Nepal Earthquake: Radio Station Status (As of 26 May 15)

Map shows current known operational status of radio stations within the affected districts.

Data source:
Statistical data: Interviews
Inset Map Backgrounds: OSM
Boundaries: OCHA

- Station On Air Status**
- Operational
 - Not Operational
 - Status Unknown

- Less affected districts
- Priority affected districts
- Additional affected districts - added 10 May

0 10 20 30 40

Kilometres

1:1,200,000 (A4)

Created: 26 May 2015 14:38 UTC+5:45

Map Document: MA143a_AffectedDistricts

Projection / Datum: WGS 1984

Slide Number: 00-2015-00046.MPL

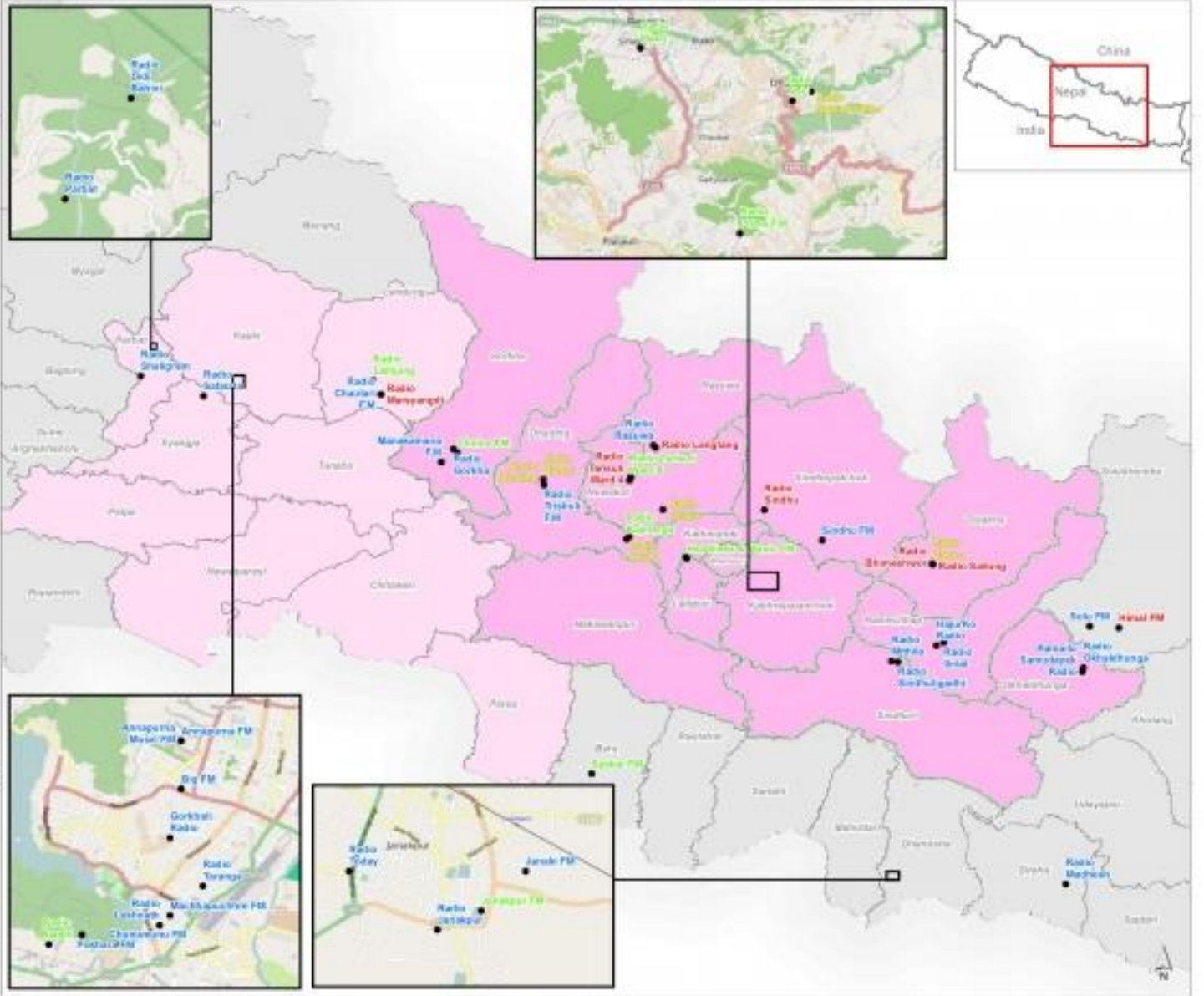
Produced by MapAction

www.mapaction.org

MAP@mapaction.org

Supported by

The depiction and use of boundaries, names and associated data shown here do not imply endorsement or acceptance by MapAction



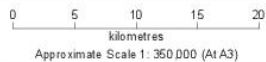


**Philippines
Typhoon Haiyan (Yolanda)
Admiralty Chart - Southern
Leyte
as of 20-Nov-2013**

Map shows Admiralty Chart No. 4476 to show bathymetry in SE Samar. Basic infrastructure and admin boundaries are shown for reference.

- Settlements
- ⊗ Coordination Hubs
- Roads**
- Primary
- Secondary
- Other
- Administrative Boundaries**
- ▭ Province
- ▭ Municipality

NOT TO BE USED FOR NAVIGATION



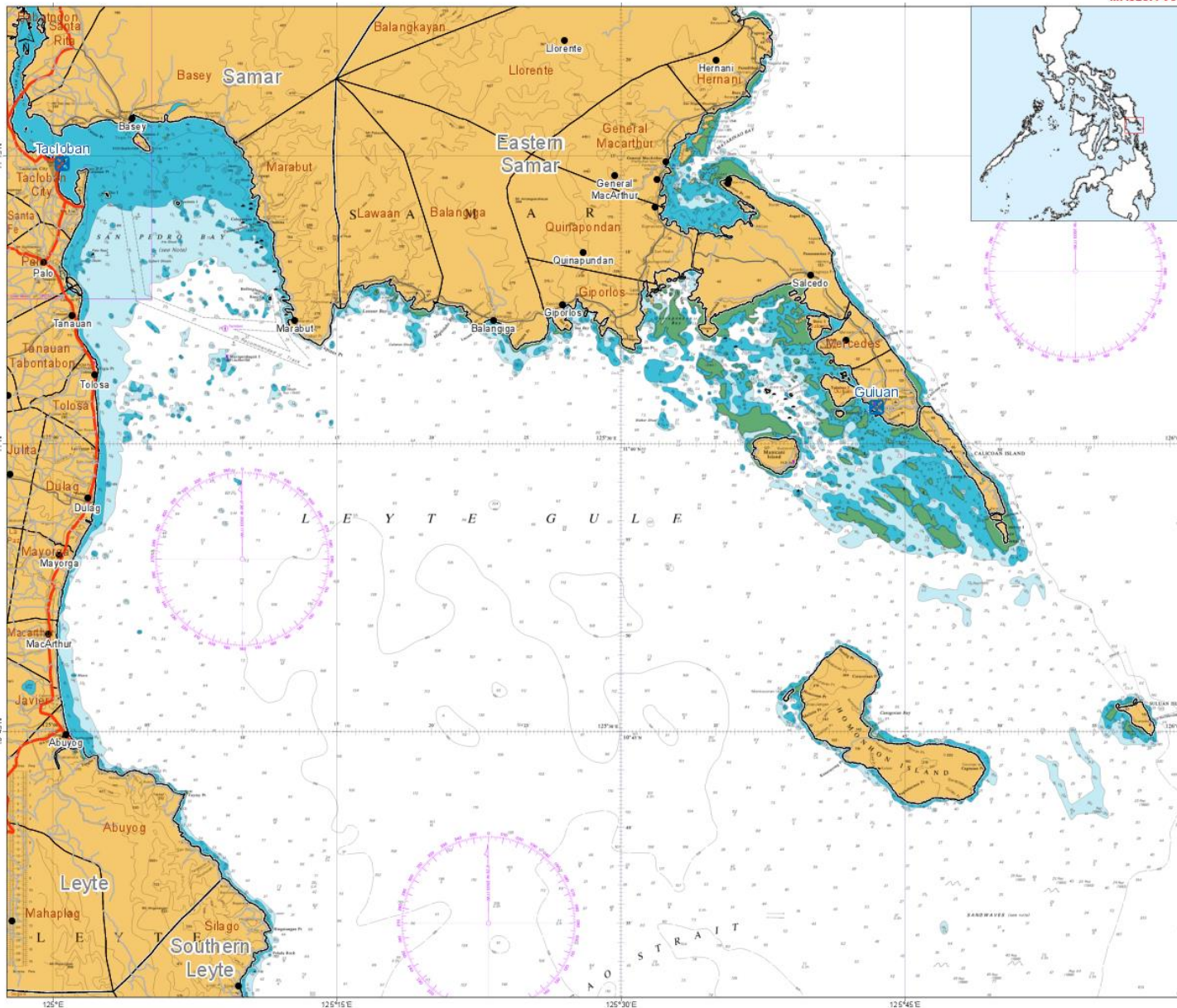
Data sources
 Situational data: None
 Boundaries: GADM
 Settlements: OSM
 Roads: NAMRIA
 Other: ARCs Charts (www.pisysmarine.com)

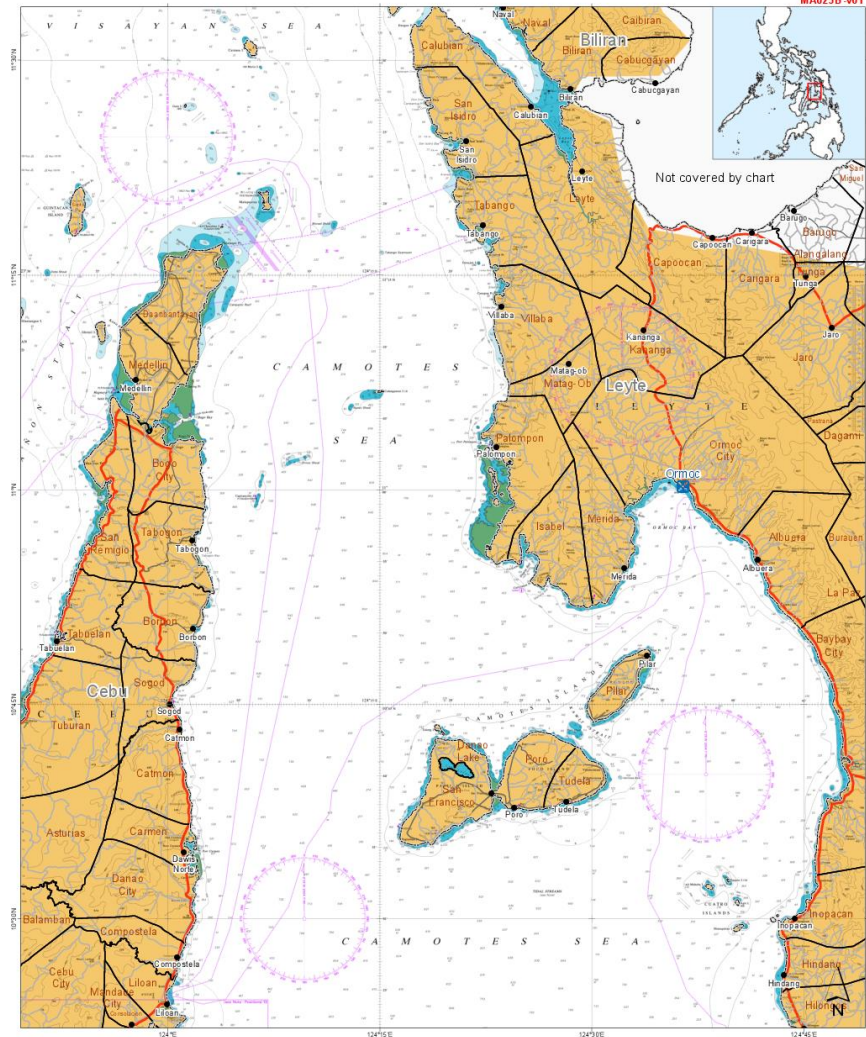
Created 20 Nov 2013 / 10:00 UTC+08:00
Map Document MA025A_AdmiraltyChart_SE_Samar_v01
Projection / Datum WGS 1984 World Mercator
Grid Number TC-2013-000139-PHL



The depiction and use of boundaries, names and associated data shown here do not imply endorsement or acceptance by MapAction.

Produced by MapAction www.mapaction.org
philippines@mapaction.org

MapAction is grateful for the support of UK aid





 <p>Philippines Typhoon Haiyan (Yolanda) Admiralty Chart - Camotes Sea (as of 20 Nov-2013)</p>	<p>Map shows Admiralty Chart No. 4477 to show bathymetry between Leyte and Cebu. Basic land infrastructure and admin boundaries are shown for reference.</p> <p>NOT TO BE USED FOR NAVIGATION</p> <p>Data sources Situational data: None Boundaries: GADM Settlements: GSN Roads: NAMRIA Other: ARCs Charts (www.pisysmarine.com)</p>	<ul style="list-style-type: none"> • Settlements ⊗ Coordination Hubs Roads — Primary — Secondary — Other Administrative Boundaries ▭ Province ▭ Municipality 	<p>0 5 10 15 Kilometers</p> <p>Approximate scale 1:400,000 (at A3)</p> <p>Created 20 Nov 2013 12:00 UTC+08:00 Map Document MA025B_AdmiraltyChart_CamotesSea_v01 Projection / Datum WGS 1984 World Mercator Chart Number TC-2013-000139-PHC</p> <p>The depiction and use of boundaries, names and associated data shown here do not imply endorsement or acceptance by MapAction.</p> <p>Produced by MapAction www.mapaction.org philippines@mapaction.org</p> <p>MapAction is grateful for the support of UK aid </p>
---	---	---	---

Turks & Caicos Before

After



“Inform the decisions that really matter with relevant and timely mapped information that will help save millions of lives and enable communities to become more resilient in the face of further disaster or conflict”

Our supporters



Donate



Regular gifts



Volunteer



Fundraise



Corporate partnerships



Payroll giving



Leave a legacy



Be an Ambassador



Trusts and foundations



<https://mapaction.org/get-involved/>

